

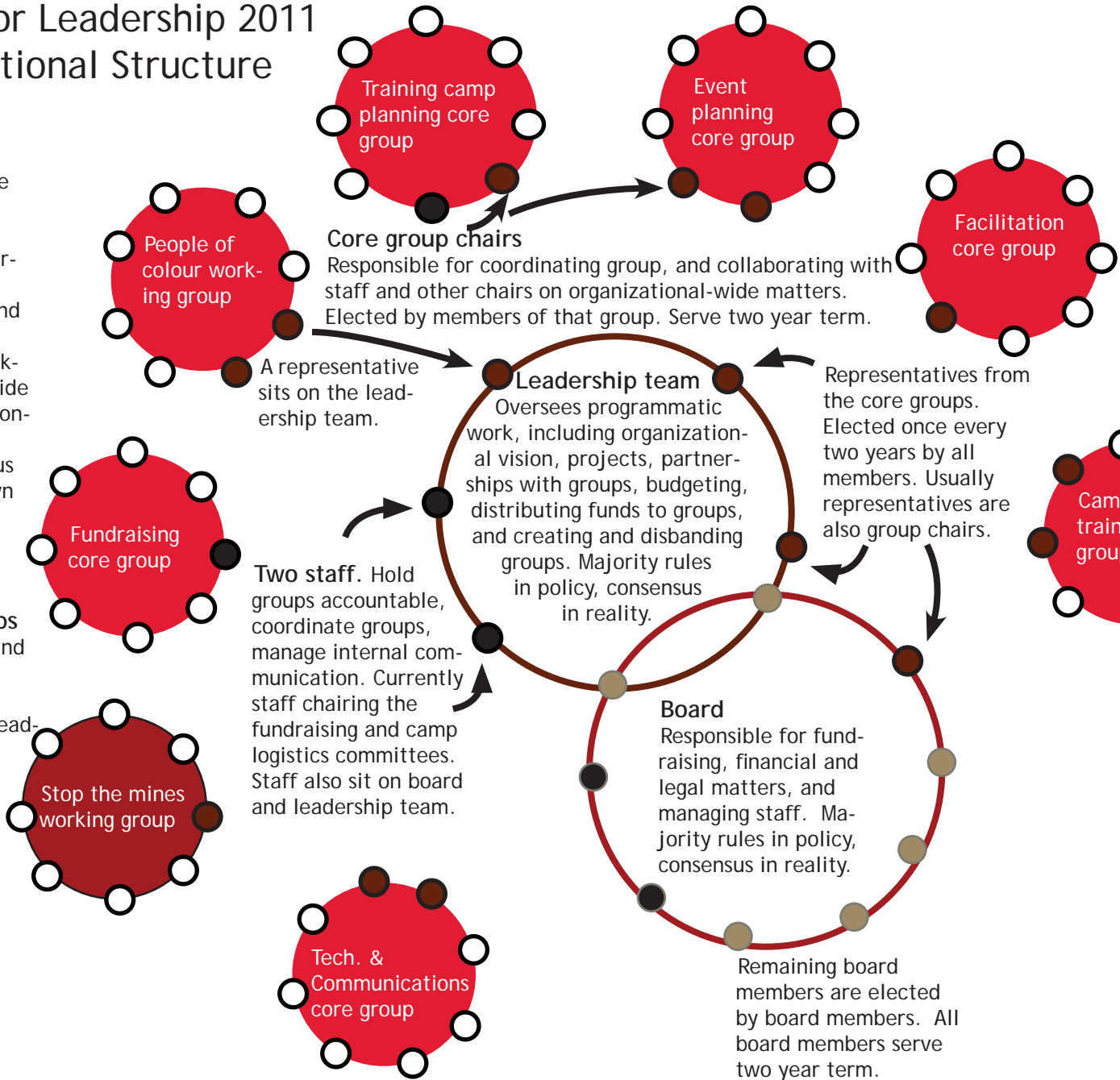
Center for Leadership 2011 Organizational Structure

Core groups

Core groups are permanent. Core groups organize and execute projects, mentoring, curriculum development, and trainings. Core groups (and working groups) decide their own decision-making process, usually consensus with a drop down to 80%.

Working groups

Working groups are temporary and are created and disbanded when needed by the leadership team.



Members
Each group sets and manages their own specific recruitment and initiation process. Overall most groups have agreed to the following process: people become members by being invited by another member to join a core group. Members agree to abide by the organization's mission. Members must have required skills, and experience training. Members can be active in more than one group.

Legend

- Wanna-be member
- Member
- Working group
- Core group
- Staff
- Board member
- Group chair